

INTEC



Versorgungstechnik GmbH u. Co. KG

Auszug aus der Referenzliste

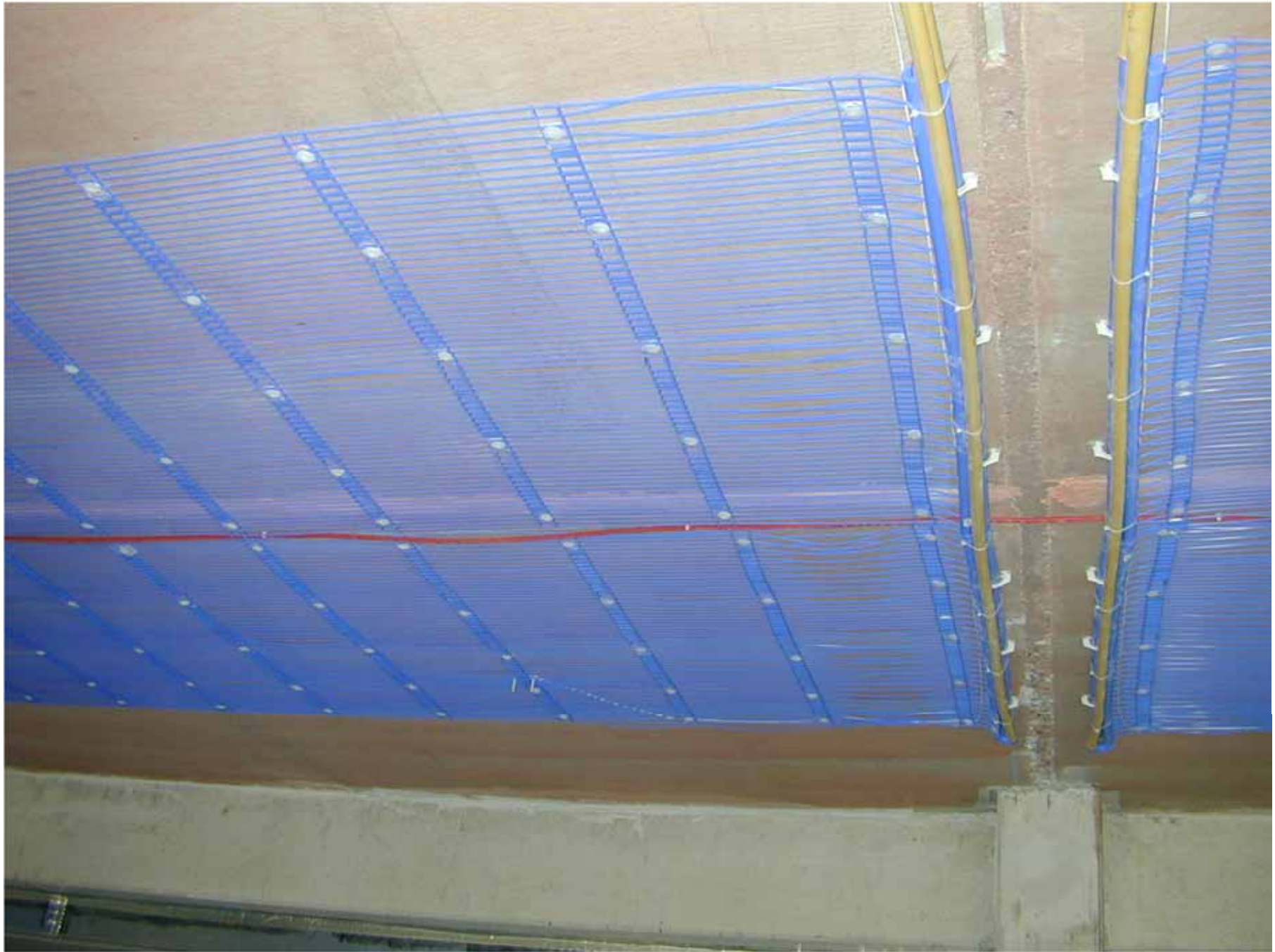
- Markgrafenhaus Berlin – Markgrafenstr. 34, Berlin
3.000 m² Kühldecken
- Treptower – Allianz-Gebäude, Berlin – Treptow
11.600 m² Kühldecken
- Potsdamer Platz, Berlin – Parkkolonnaden,
Köthener Straße 4
2.500 m² Kühldecken
- Oberbaum-City Berlin
900 m² Kühldecken

Auszug aus der Referenzliste

- Konrad-Adenauer-Stiftung – Köbis-Dreieck B1
1.900 m² Kühldecken
- Oberbaum-City Berlin, Gebäude 4 ¼ Kühlung
Dachgeschoss und Serverräume
1.000 m² Kühldecken
- Potsdamer Platz – Haus 4 / Ausbau 1. und 2. OG
1.700 m² Kühldecken
- Potsdamer Platz – Haus 4 / Ausbau 3. und 7. OG
4.000 m² Kühldecken

Auszug aus der Referenzliste

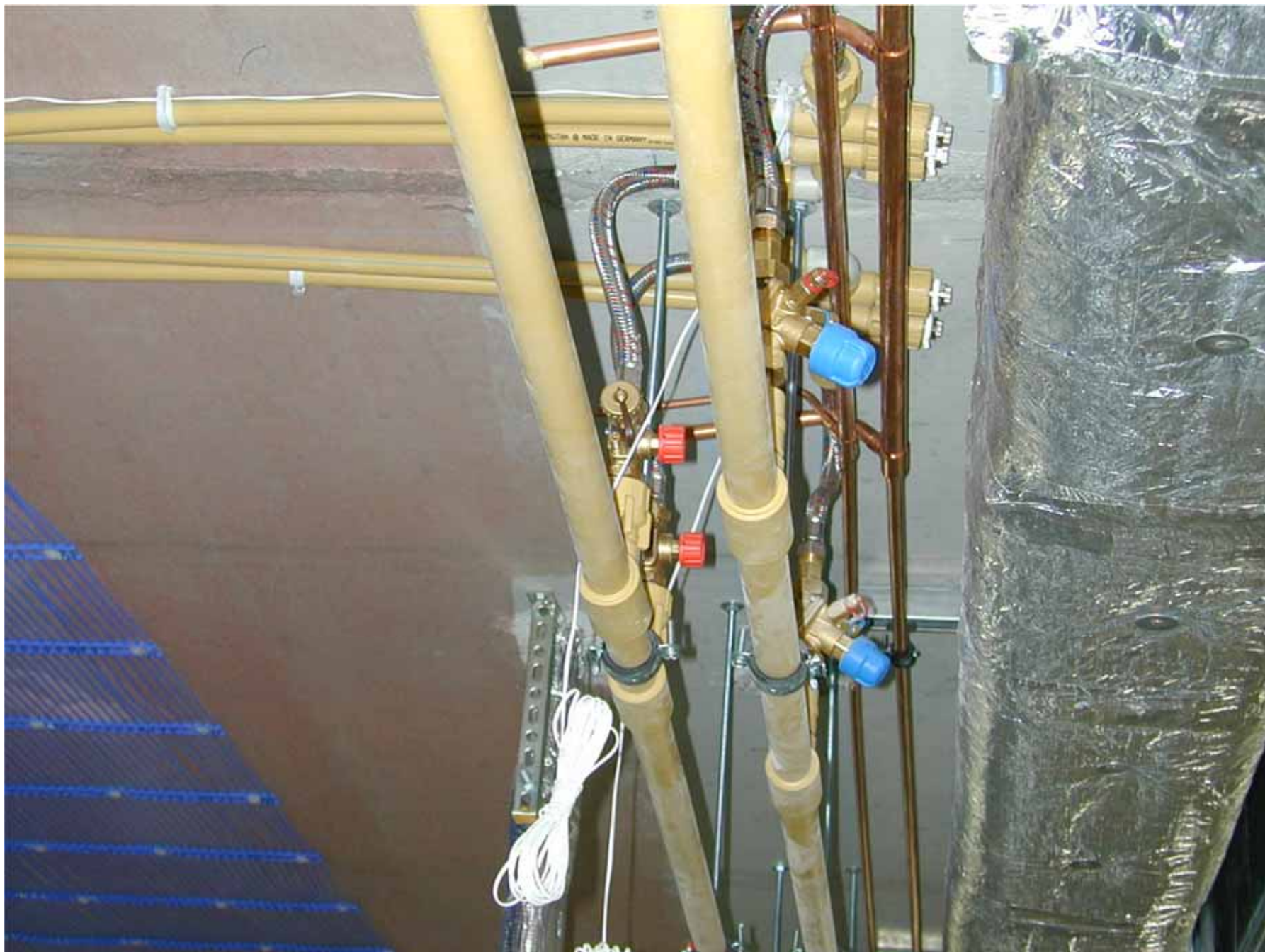
- Chinesisches Kulturinstitut
800 m² Kühldecken
- Städtisches Klinikum Brandenburg /
2. Bauabschnitt Haus 3 (Neubau Ost)
3.600 m² Kühldecken



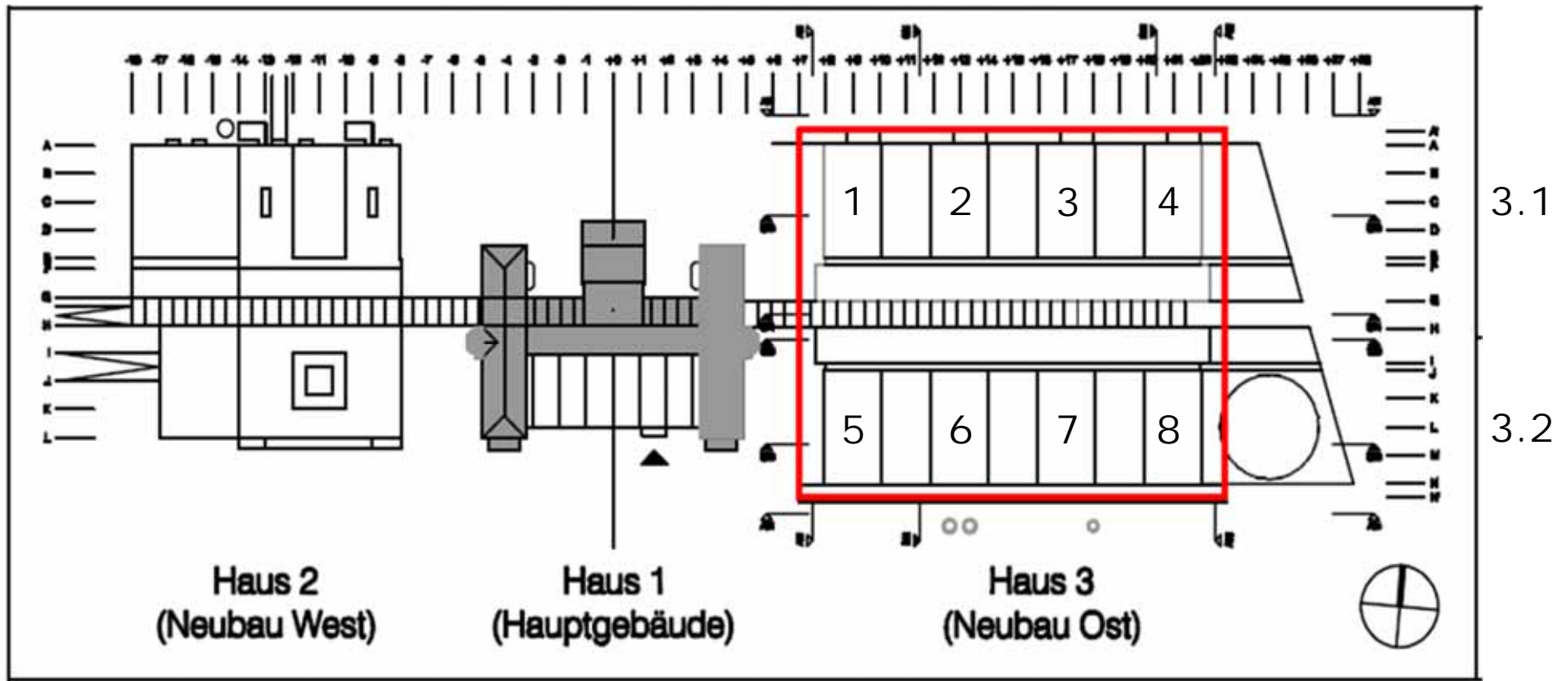


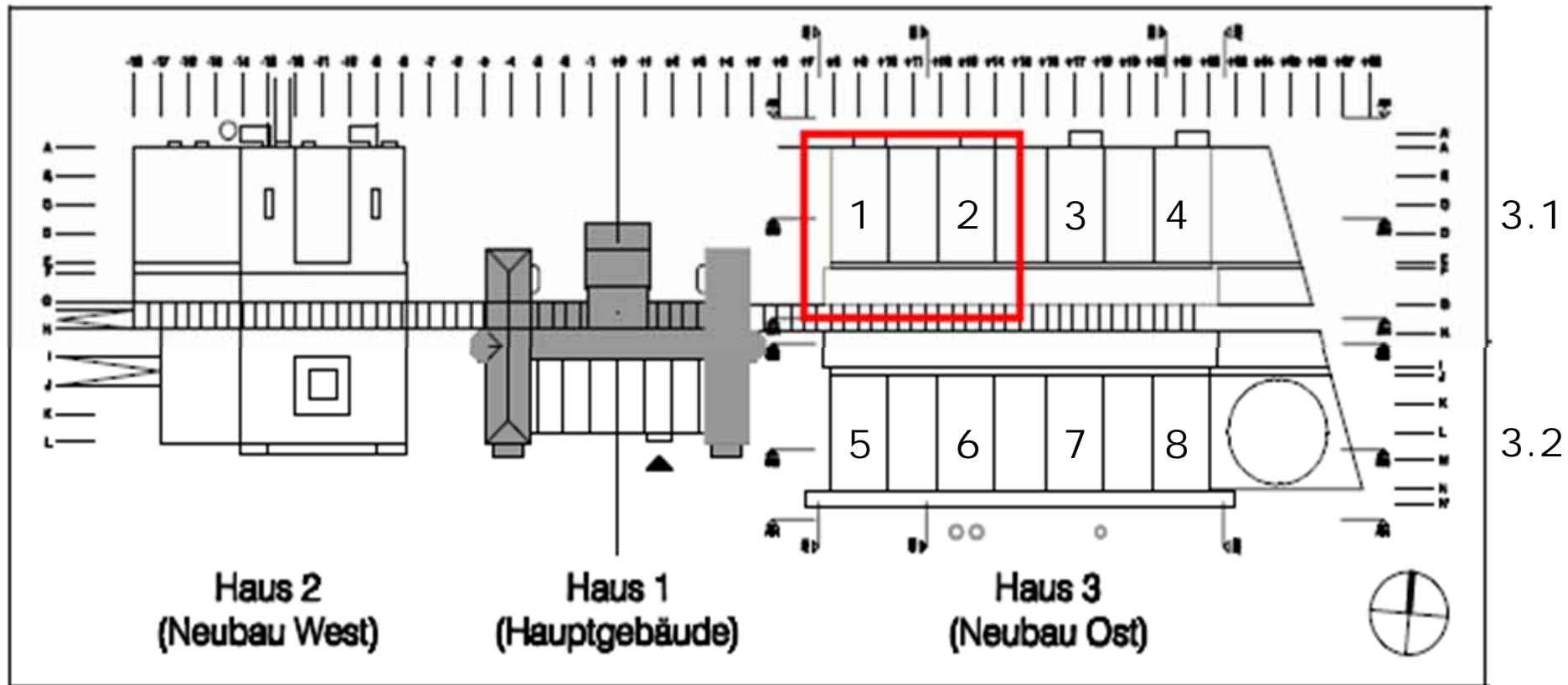


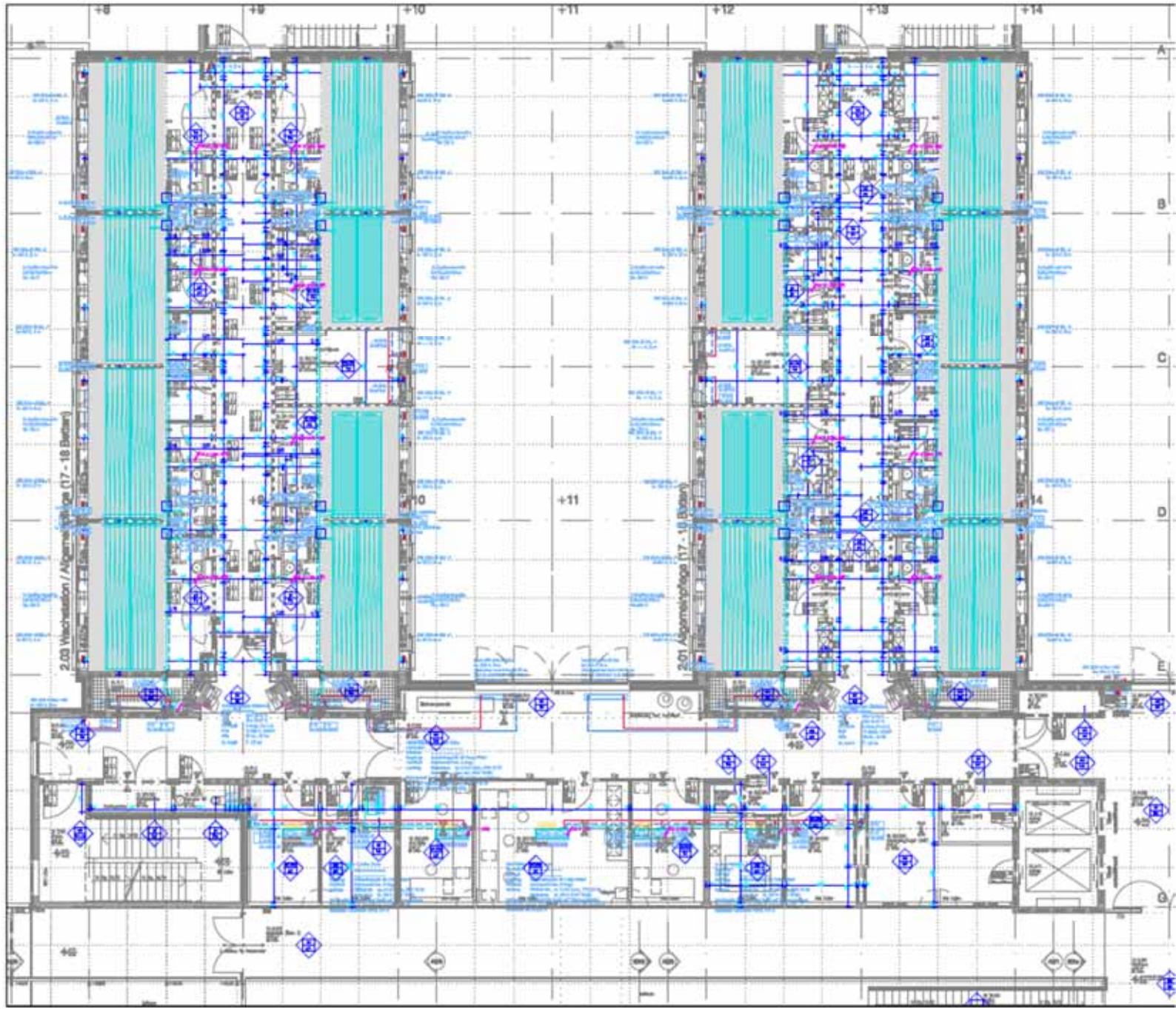




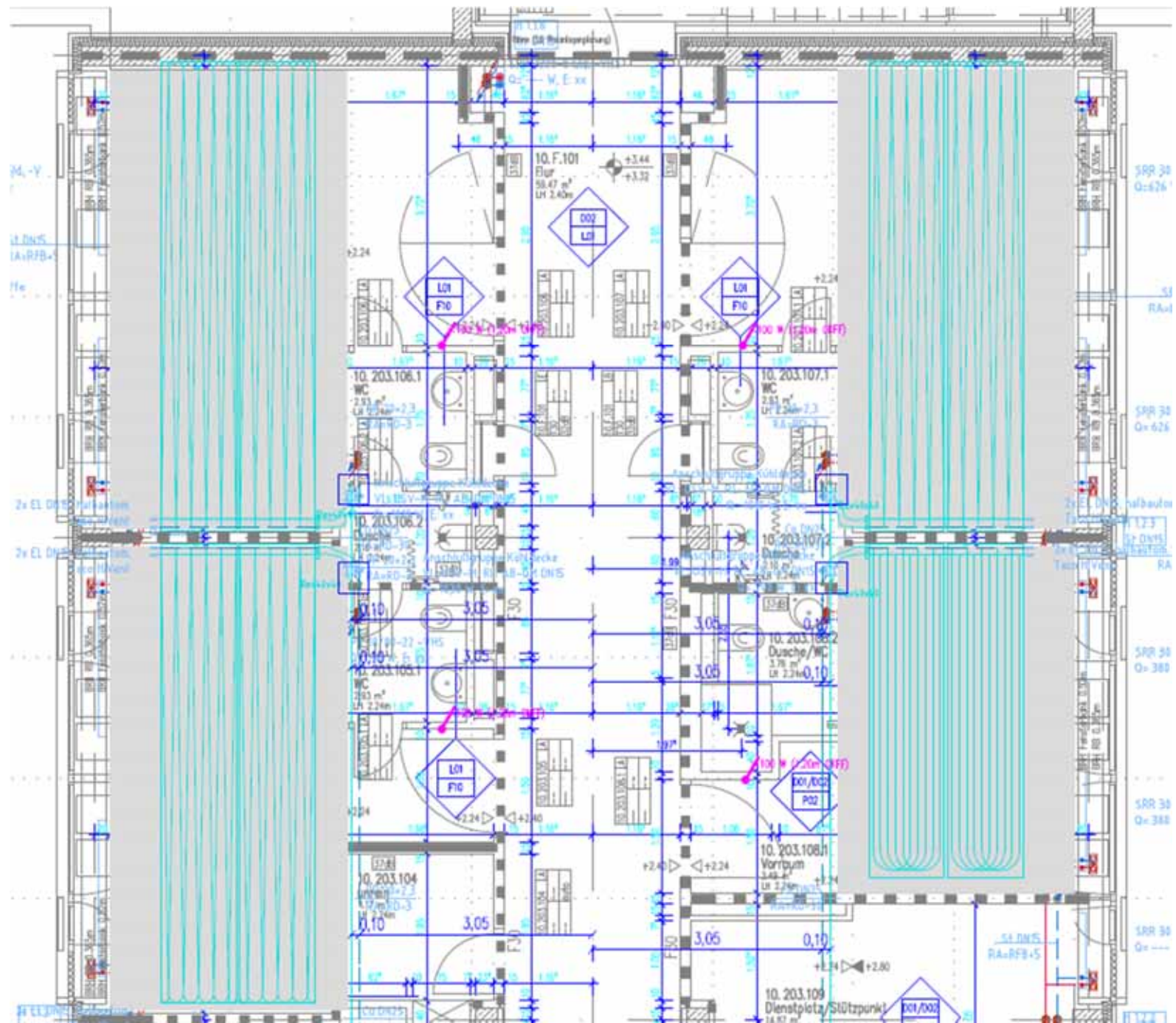














Calculate



Save inputs



Load inputs



Help



Print

SUB-DIAGRAM
WINDOWS

Cycle Spec.

State Points

Auxiliary

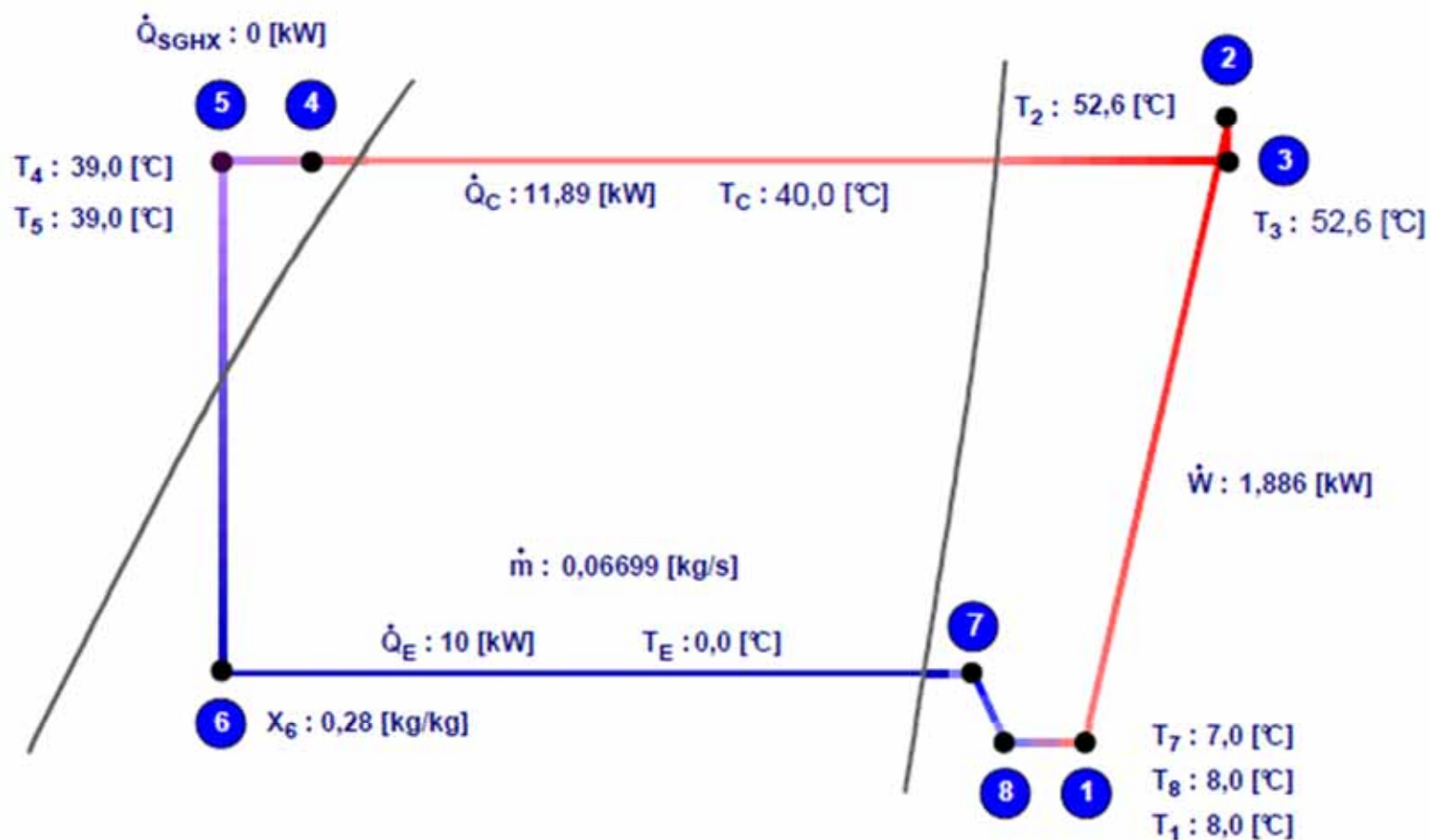
© 1999 - 2001

Department of
Mechanical EngineeringTechnical University
of Denmark

Version 1.48

TOOL C.1

LOG(p),h-DIAGRAM



REFRIGERANT R134a

COP : 5,304

COP* : 5,346

 $\eta_{CARNOT} : 0,783$

CoolPack

Calculate

Save inputs

Load inputs

Help

Print

SUB-DIAGRAM
WINDOWS

Cycle Spec.

State Points

Auxiliary

© 1999 - 2001

Department of
Mechanical Engineering
Technical University
of Denmark

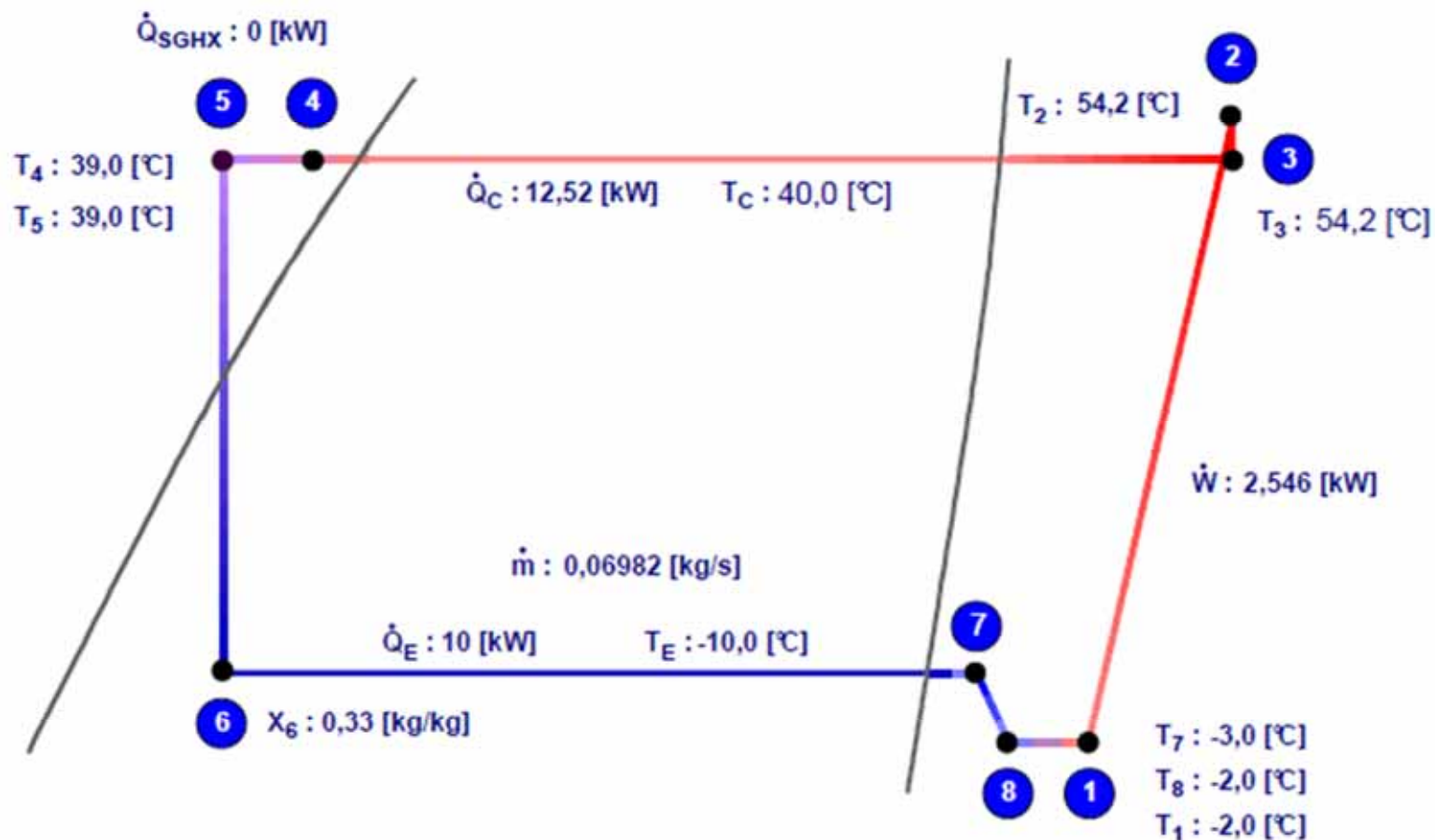
Version 1.48

TOOL C.1

CYCLE ANALYSIS : ONE-STAGE CYCLE

> DX EVAPORATOR

LOG(p),h-DIAGRAM



REFRIGERANT R134a

COP : 3,928

COP* : 3,958

$\eta_{CARNOT} : 0,752$

CoolPack

- Calculate
- Save inputs
- Load inputs
- Help
- Print

SUB-DIAGRAM WINDOWS

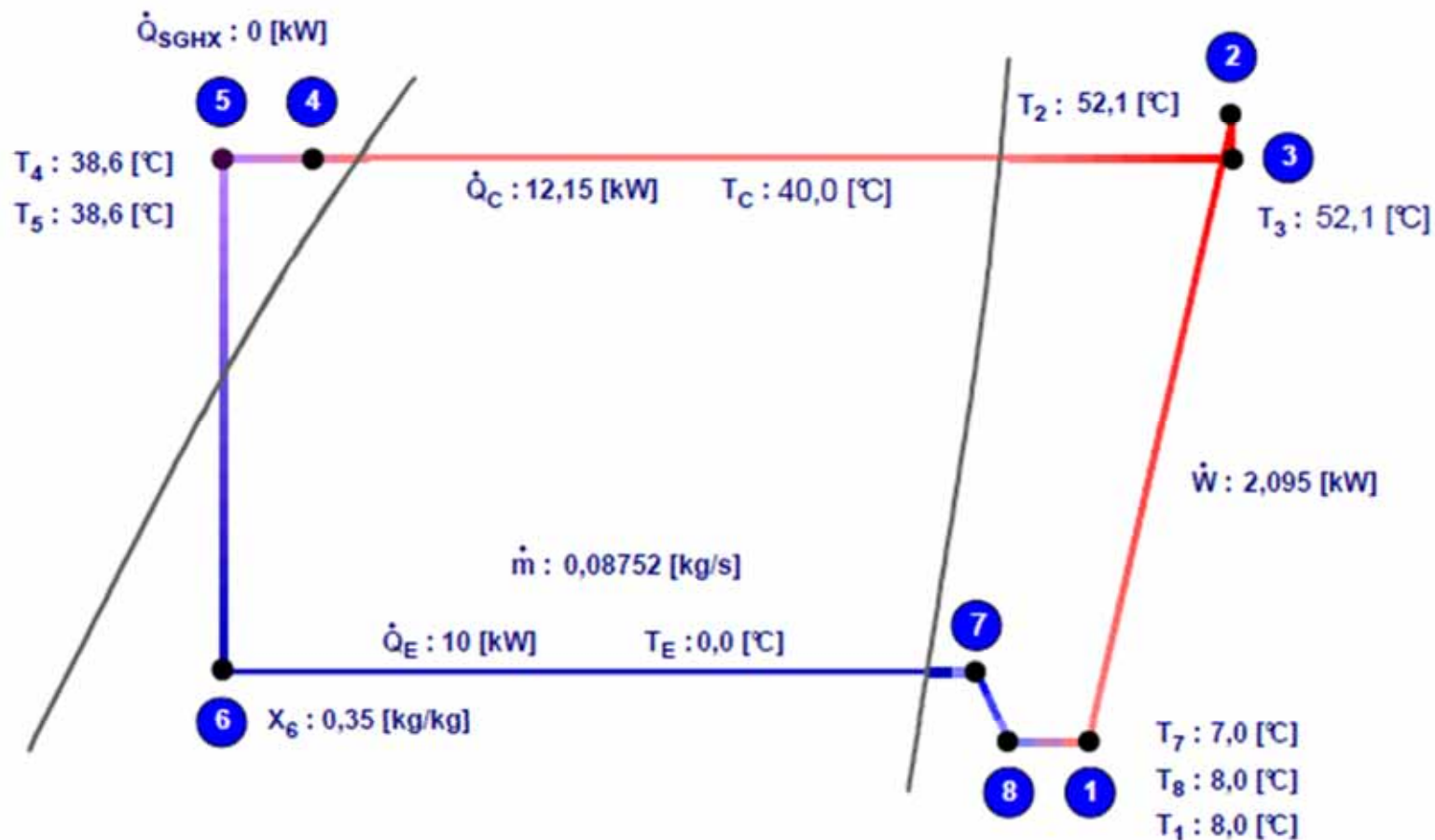
- Cycle Spec.
- State Points
- Auxiliary

© 1999 - 2001
Department of
Mechanical Engineering
Technical University
of Denmark
Version 1.48
TOOL C.1

CYCLE ANALYSIS : ONE-STAGE CYCLE

> DX EVAPORATOR

LOG(p).h-DIAGRAM



REFRIGERANT R404A

COP : 4,773

COP* : 4,830

$\eta_{CARNOT} : 0,707$

CoolPack

Calculate

Save inputs

Load inputs

Help

Print

SUB-DIAGRAM
WINDOWS

Cycle Spec.

State Points

Auxiliary

© 1999 - 2001

Department of
Mechanical Engineering
Technical University
of Denmark

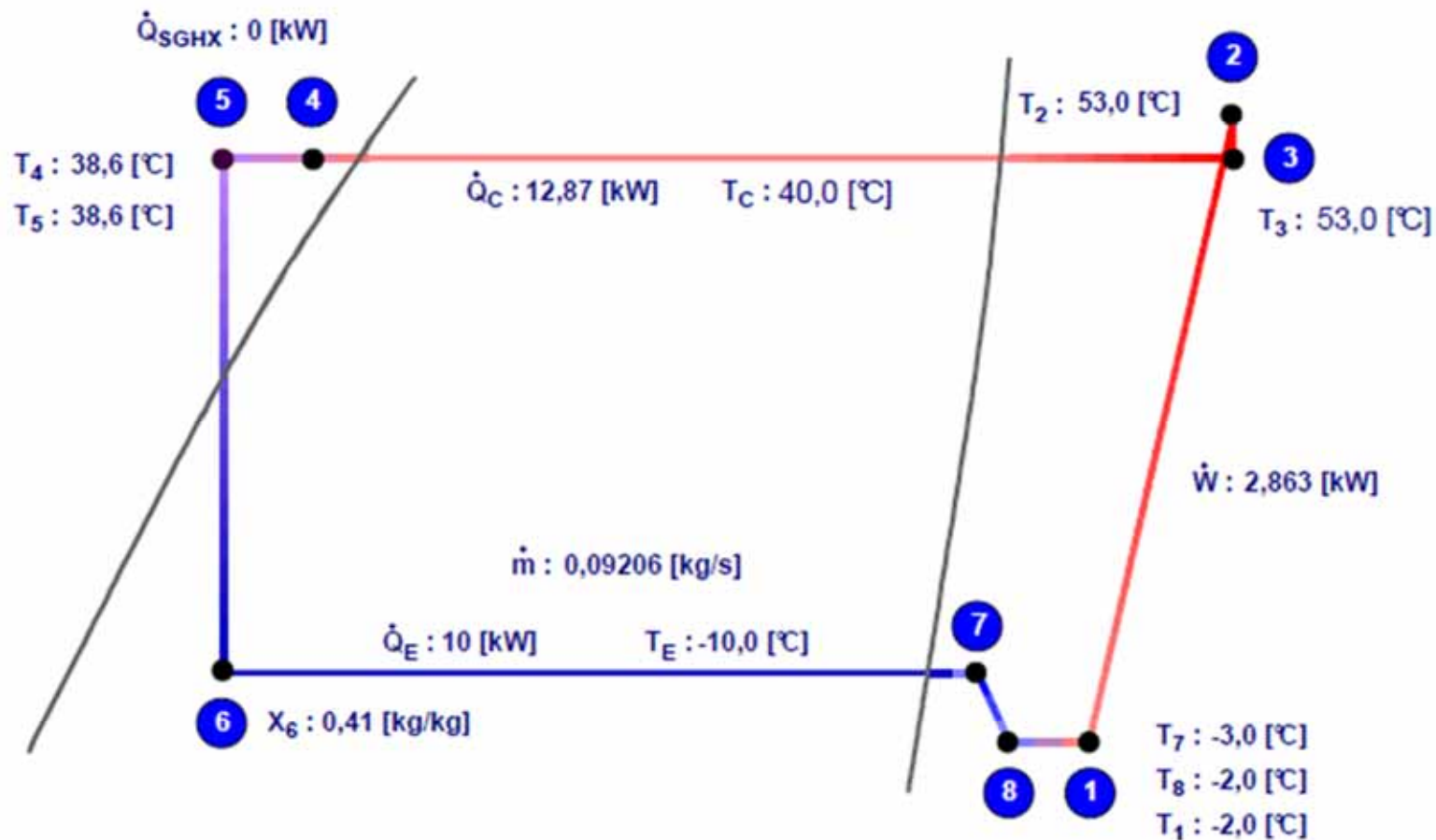
Version 1.48

TOOL C.1

CYCLE ANALYSIS : ONE-STAGE CYCLE

> DX EVAPORATOR

LOG(p),h-DIAGRAM



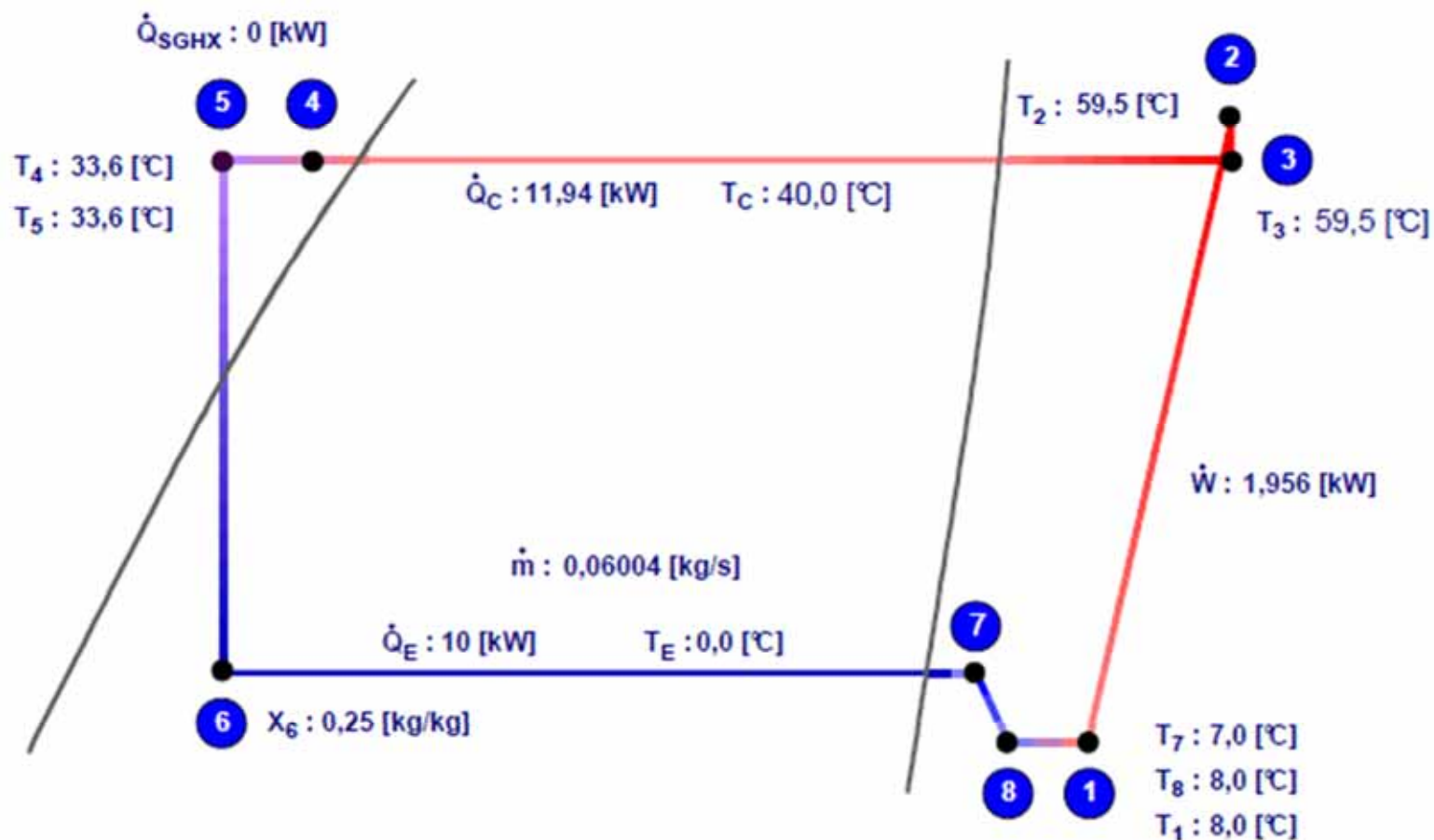
REFRIGERANT R404A

COP : 3,493

COP* : 3,533

$\eta_{CARNOT} : 0,671$

LOG(p).h-DIAGRAM



CoolPack

Calculate

Save inputs

Load inputs

Help

Print

SUB-DIAGRAM
WINDOWS

Cycle Spec.

State Points

Auxiliary

© 1999 - 2001

Department of
Mechanical Engineering

Technical University
of Denmark

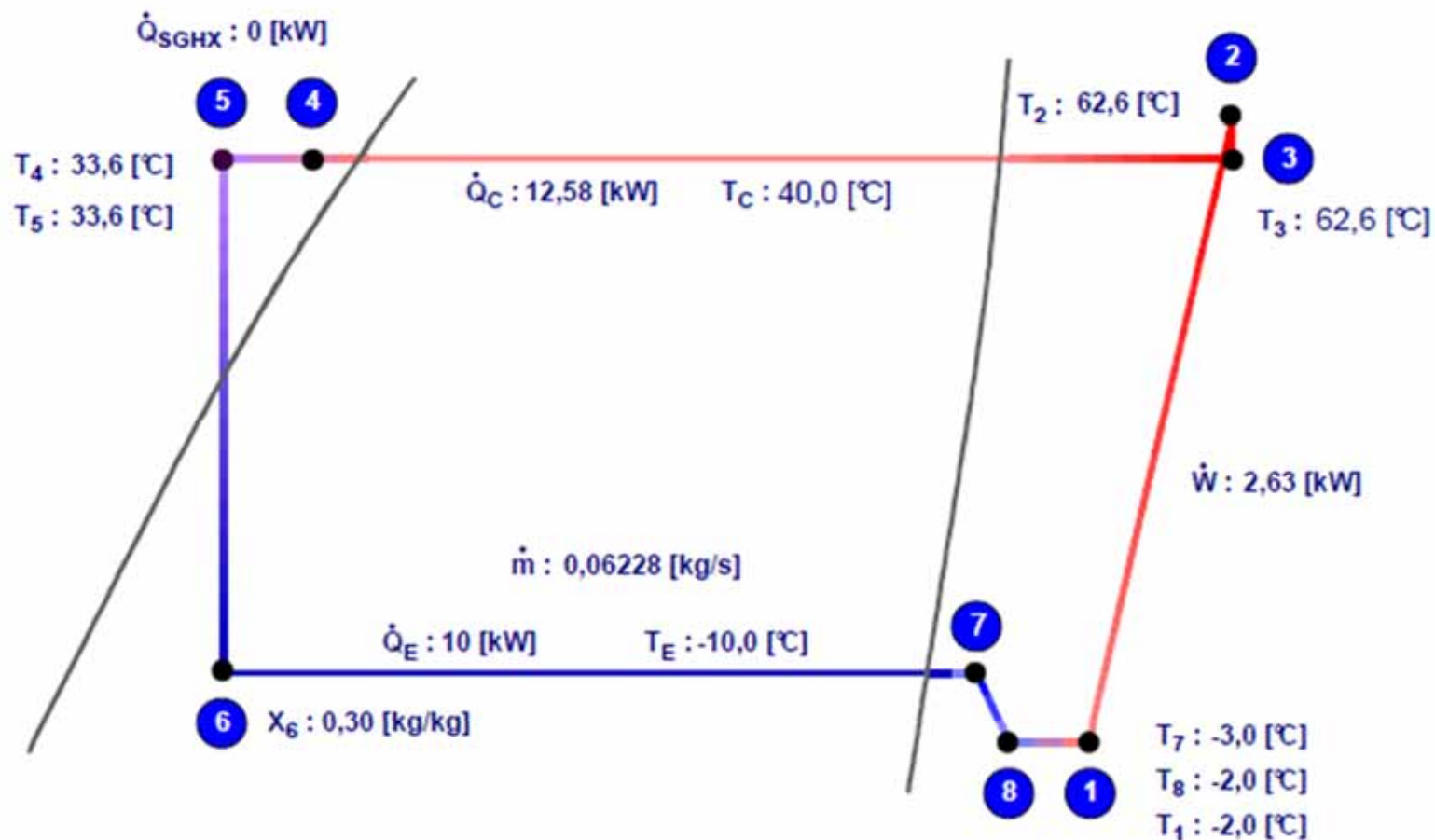
Version 1.48

TOOL C.1

CYCLE ANALYSIS : ONE-STAGE CYCLE

> DX EVAPORATOR

LOG(p),h-DIAGRAM



REFRIGERANT R407C

COP : 3,803

COP* : 3,827

$\eta_{CARNOT} : 0,727$